



## LOOPBACK AEC SPECIFICATION

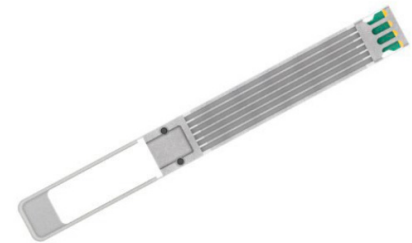
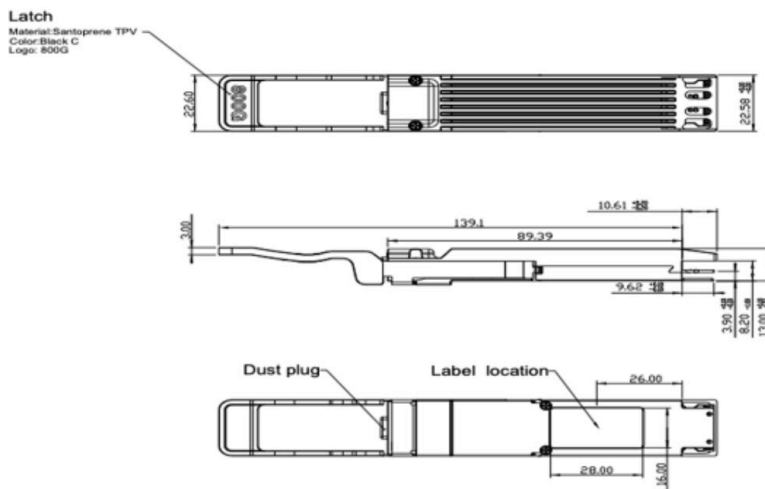
### PLUG & PLAY LOOPBACK AEC

# Active Loopback Test Functionality for 1.6T Based OSFP-XD Host

## 1.6T (16x106G) OSFP-XD PAM4

### Credo's HiWire Loopback Active Electrical Cable (eLBM)

Credo's CACHX1T-C0-HW Loopback AEC is design to provide an active loopback test functionality for 1.6T (16x106G) based OSFP hosts. The module also includes the ability to control a power and thermal load of up to 28W, and well as provide several PRBS, FEC parato, eye height and other loopback functions.



## Features

- 1.6T (16x106G) loop back configuration controllable on a lane by lane basis
- PRBS Generation and evaluation on a lane by lane basis
- Eye Height measurement with PRBS or mission mode traffic
- CMIS 5.1 compliant
- Single 3.3V power supply
- Up to 18W resistive thermal load that is software controlled via the CMIS port
- Typ. 14W power dissipation with 16 lanes of loopback enabled
- Thin fin design to allow 2.2-2.6 CFM airflow per port
- Hot pluggable
- RoHS2 compliant
- I<sup>2</sup>C management interface
- Operating case temperature range: 0° to +70°C

## Supported Standards and Interfaces

- Common Management Interface Specification (CMIS) v5.1

## Key Features

Parameter	Value
Module Form Factor	QSFP-XD
Number of Data Lanes	16 TX and 16 RX per module (PAM4)
Maximum Aggregate Data Rate	1600Gbps
Nominal Data Rate per Lane	106.25Gbps (PAM4)
Electrical Interface and Pin-out	120-pin edge connector
Pin Description	Per QSFP-XD Hardware Specification
Management Interface	I <sup>2</sup> C, serial, timing per Common Management Interface Specification for 8X/16X Pluggable Transceivers V5.1
Power supply (DC)	3.3V

## Product Selections

Part Number	Configuration
CACHX1T-C0-HW	1.6T QSFP-XD Loopback AEC

For more information please visit [www.credosemi.com](http://www.credosemi.com)  
or email [sales@credosemi.com](mailto:sales@credosemi.com)