



## LOOPBACK AEC SPECIFICATION

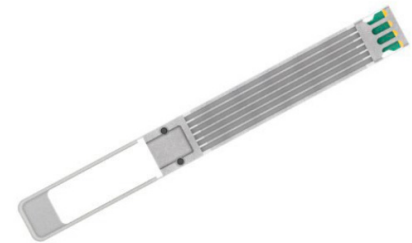
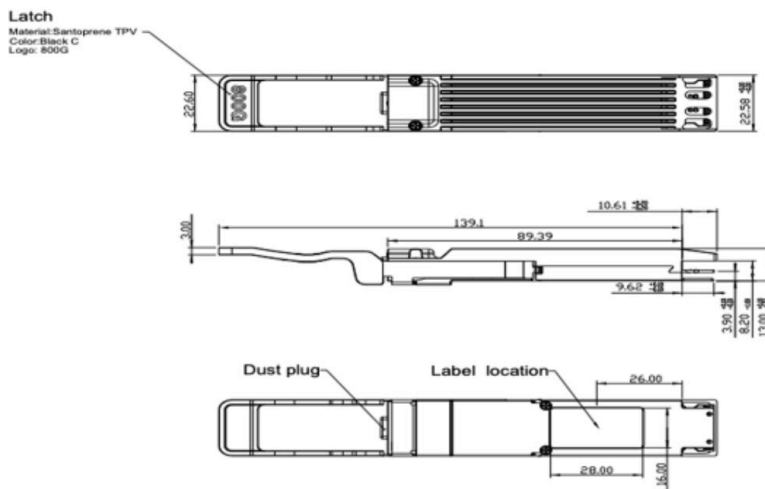
### PLUG & PLAY LOOPBACK AEC

# Active Loopback Test Functionality for 800G Based OSFP Hosts

## 800G (8x100G) OSFP

### Credo's HiWire Loopback Active Electrical Cable (eLBM)

Credo's CAC8X1A-C0-HW Loopback AEC is design to provide an active loopback test functionality for 800G (8x100G) based OSFP hosts. The module also includes the ability to control a power and thermal load of up to 28W, and well as provide several PRBS, FEC parato, eye height and other loopback functions.



## Features

- 800G (8x100G) loop back configuration controllable on a lane by lane basis
- PRBS Generation and evaluation on a lane by lane basis
- Eye Height measurement with PRBS or mission mode traffic
- CMIS 5.0 compliant
- Single 3.3V power supply
- Up to 25W resistive thermal load that is software controlled via the CMIS port
- Typ. 7W power dissipation with 8 lanes of loopback enabled
- Thin fin design to allow 2.2-2.6 CFM airflow per port
- Hot pluggable
- RoHS2 compliant
- I<sup>2</sup>C management interface
- Operating case temperature range: 0° to +70°C

## Supported Standards and Interfaces

- Common Management Interface Specification (CMIS) v5.0

## Key Features

Parameter	Value
Module Form Factor	QSFP
Number of Data Lanes	8 TX and 8 RX per module (PAM4)
Maximum Aggregate Data Rate	800Gbps
Nominal Data Rate per Lane	106.25Gbps (PAM4)
Electrical Interface and Pin-out	60-pin edge connector
Pin Description	Per QSFP Hardware Specification
Management Interface	I <sup>2</sup> C, serial, timing per Common Management Interface Specification 4.0 for 8X/16X Pluggable Transceivers
Power supply (DC)	3.3V

## Product Selections

Part Number	Configuration
CAC8X1A-C0-HW	800G QSFP Loopback AEC

For more information please visit [www.credosemi.com](http://www.credosemi.com)  
or email [sales@credosemi.com](mailto:sales@credosemi.com)